



Zipr Shift

A new paradigm in zippers

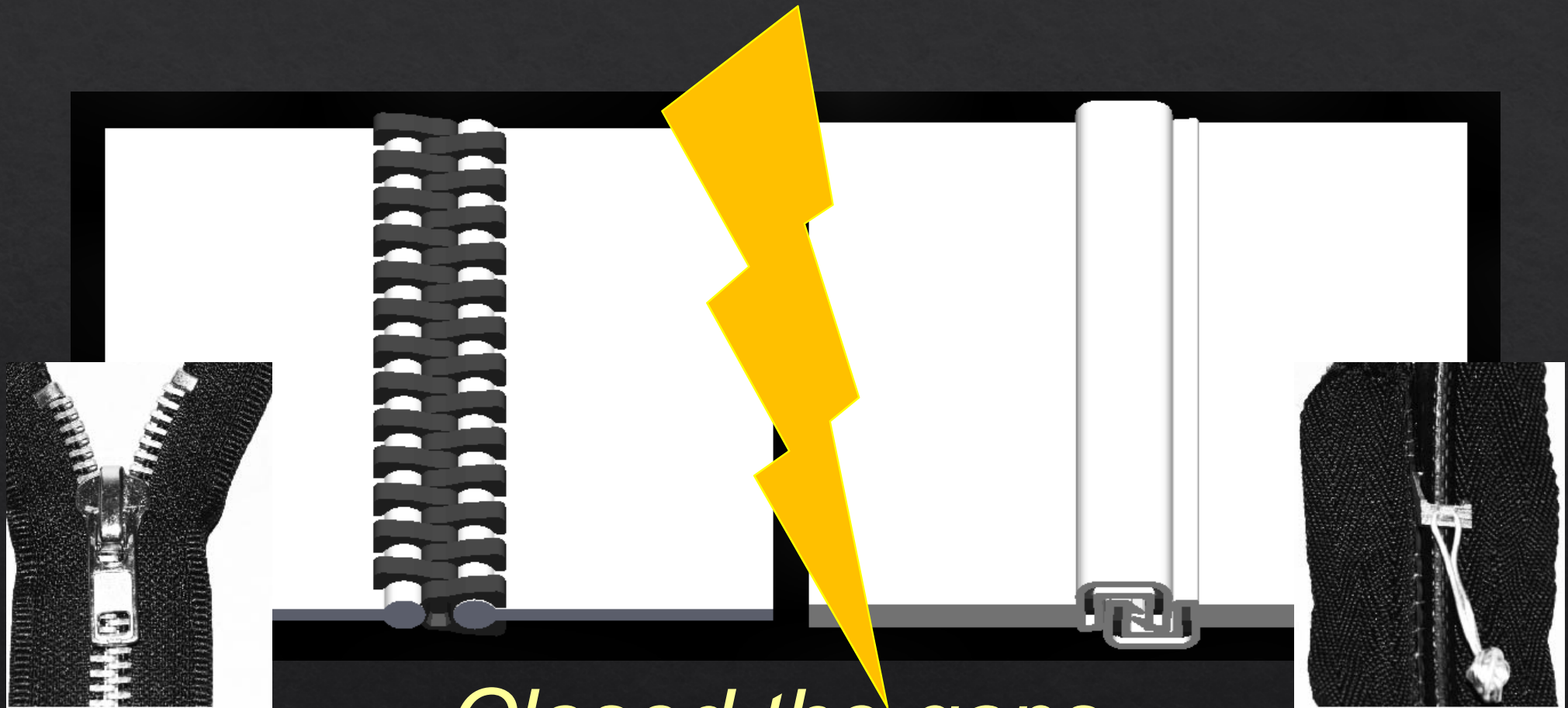
1900s



2000s

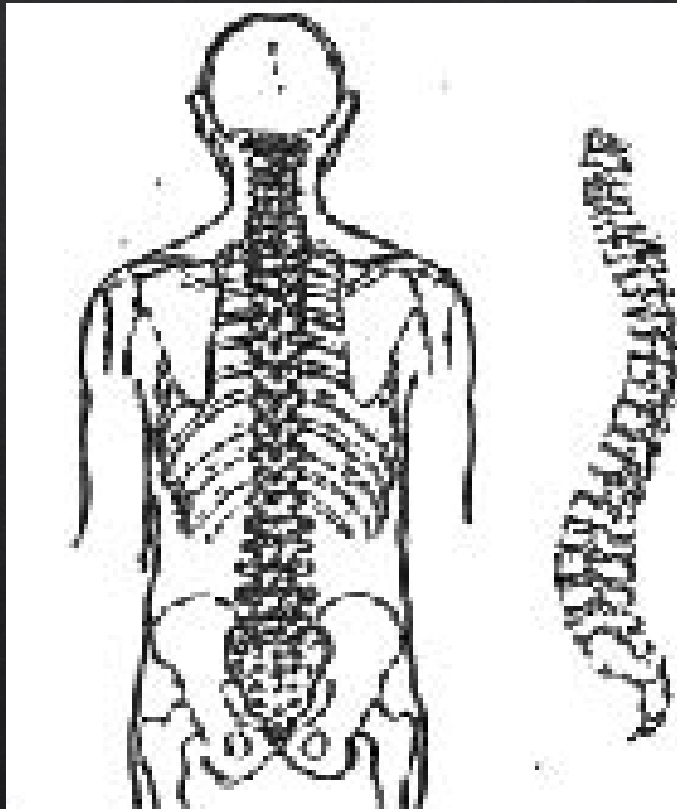


*Same problems.  
Different teeth shapes.*



*Closed the gaps.  
Unified all parts of the chain.*

# UNIQUE BIO-INSPIRED DESIGN



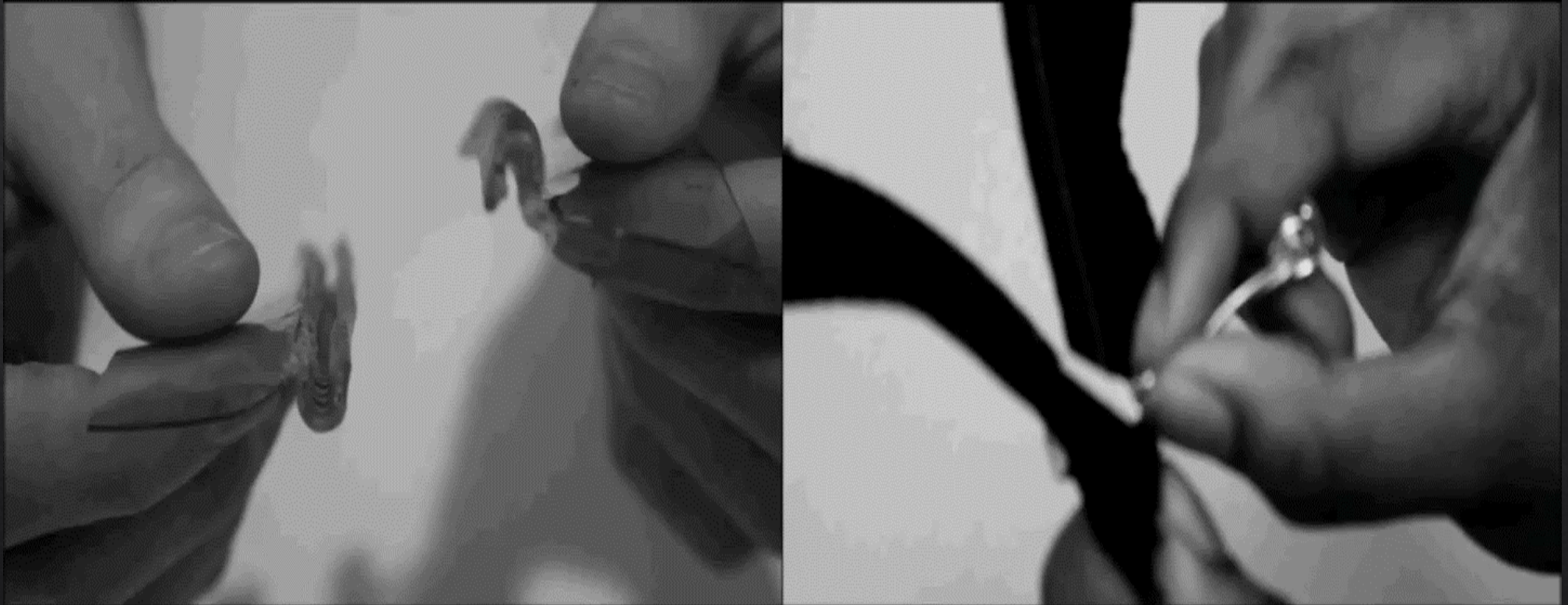
# NEW STRUCTURE

inert plastic exoskeleton

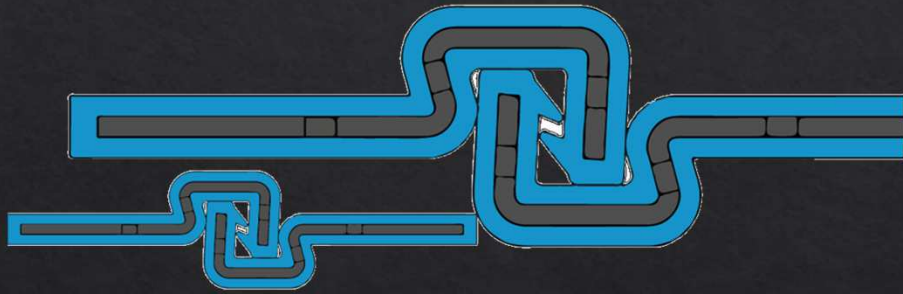


metal insert

# SAME EASE OF USE



# Standardized



**One shape  
scaled up or down**



**Increased Metal Thickness  
=  
Increased Strength**

# Surface Area

A zipper that hides with you





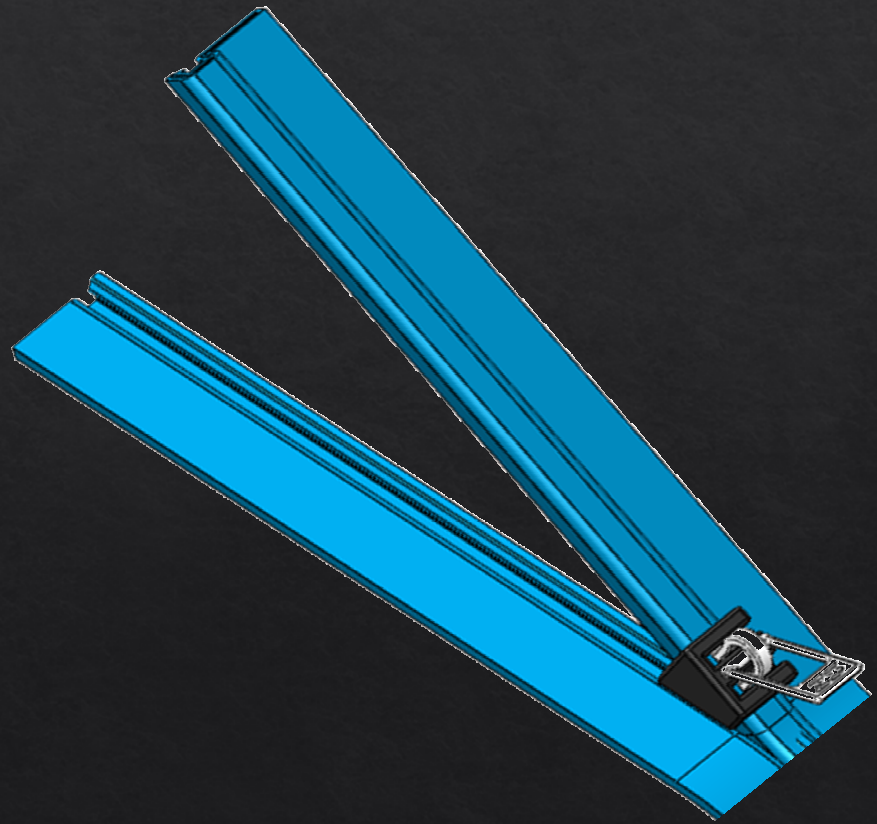
# Silent

Zip without alerting enemies



# Decontaminable

Sleek, wiped clean



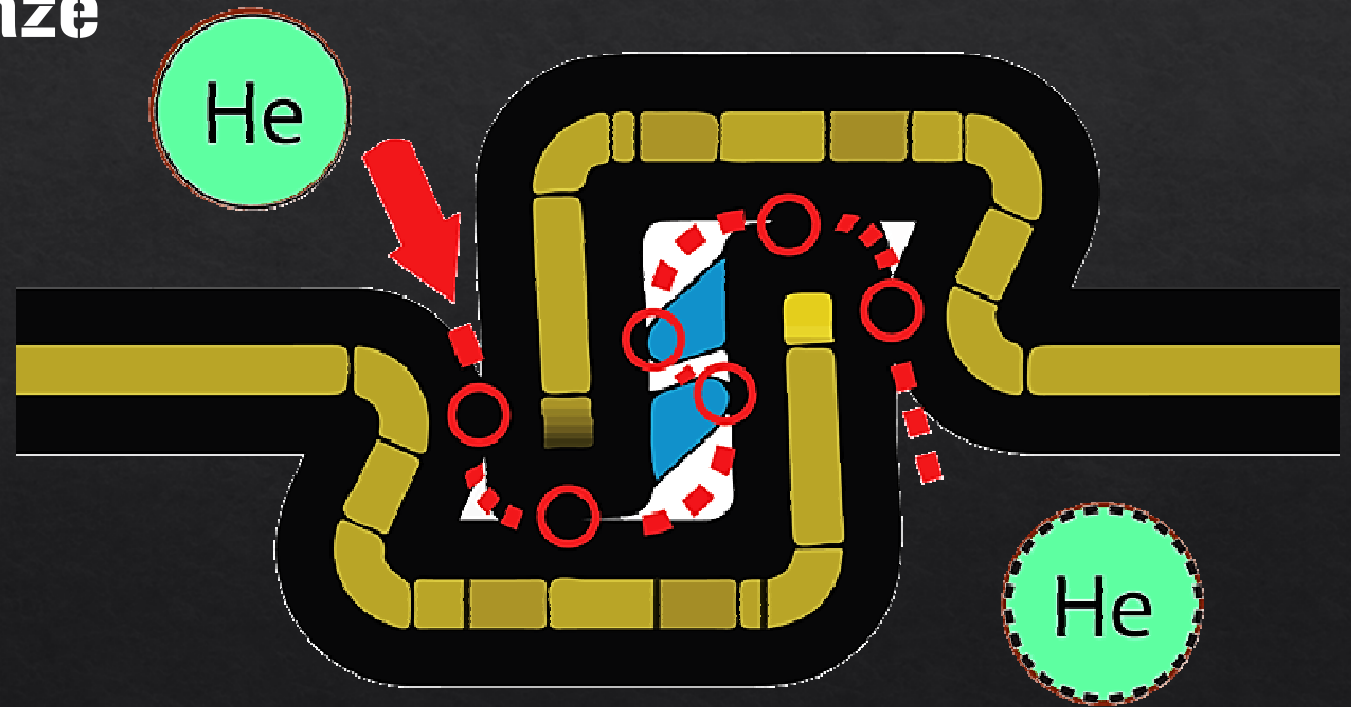
# Berry Compliant

No textiles, no problem



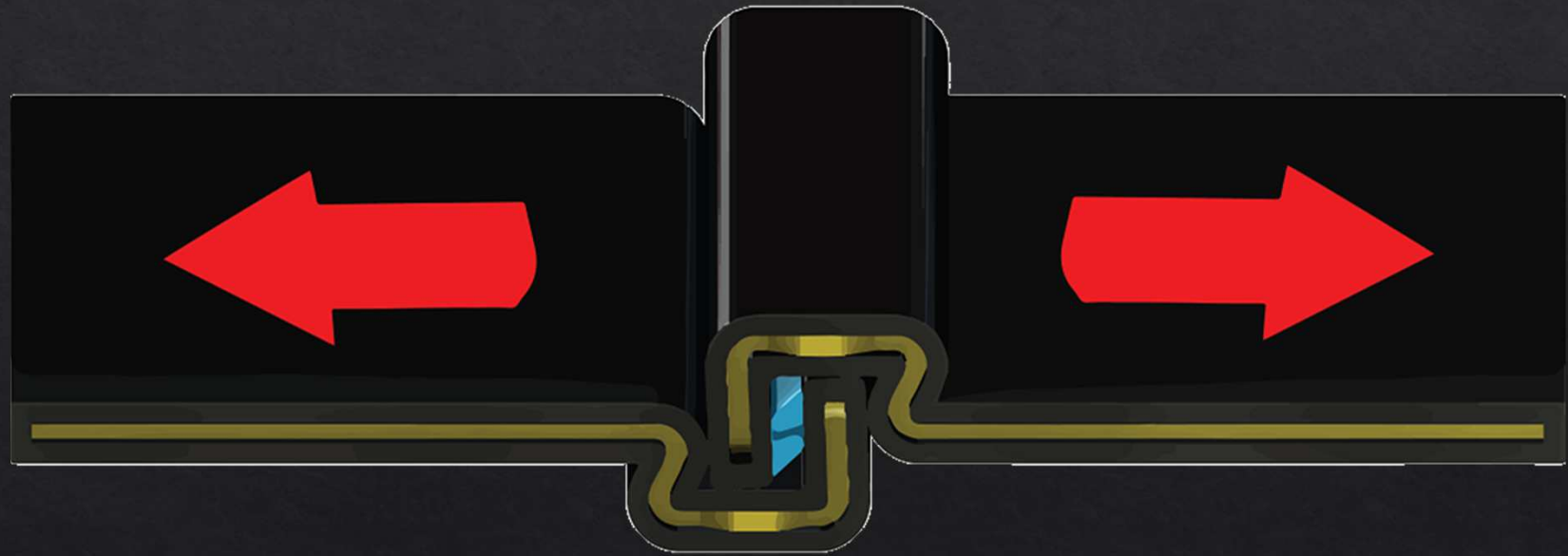
# Hermetic

Fluids run a maze



# Strong & Pressure Tight

Stress makes it better



# STRONG CHAINS ARE A COHESIVE UNIT



# FIX THE WEAKEST LINK

